

THE ROLE OF PARENTAL OCCUPATIONAL INSTABILITY ON CHILDREN EARLY SKILL DEVELOPMENT

Doctoral Student

Marta FACCHINI



PhD student in Sociology at OSC, affiliated at LIEPP
Supervisor: Carlo BARONE

Education:

M.A. Sociology and Social Research, University of Trento
B.A. Sociology, University of Salento

Research Interests:

I am interested in investigating the differentials in educational attainment based on family background, gender and ethnicity, the role of occupational instability in early skills development, the impact of educational tracking on the formation of inequalities in the life-course, labour market returns to education, causal inference and policy evaluation.



This thesis investigates the link between parental employment instability and children early skills development. Occupational instability is articulated in employment status, type of contract and job sector, while developmental outcomes include language skills, psychological adjustment as well as motor skills. Using ELFE data, I will focus on the developmental gaps for infants and toddlers in France. I will take into account the occupational instability of both family members, in order to assess the effect of gender roles and couple dynamics. Furthermore, I aim to analyze the mechanisms, disentangling the effect of the dimensions of employment instability from poverty. Lastly, I will consider the role of welfare. Using NEPS-IAB data, I will compare the cases of France and Germany, which have a similar welfare system and labor market, but differ in their support to fertility and childcare provision.

Motivation

Occupational instability

- Growing precarisation of occupations.
- The impact on early educational outcomes is less explored, particularly in continental Europe.

Early skills development

- Explore the influence of parental background before kindergarten.
- Crucial abilities for school success and social adjustment.
- Policy interventions at this stage can be highly beneficial and cost-effective.

Data

ELFE (Étude Longitudinale Française depuis l'Enfance)

- 18.000 children born in 2011
- Nationally representative
- A rich set of validated and internationally standardized measures of early skills
- Comprehensive set of control variables
- Highly detailed on the dimensions of economic instability

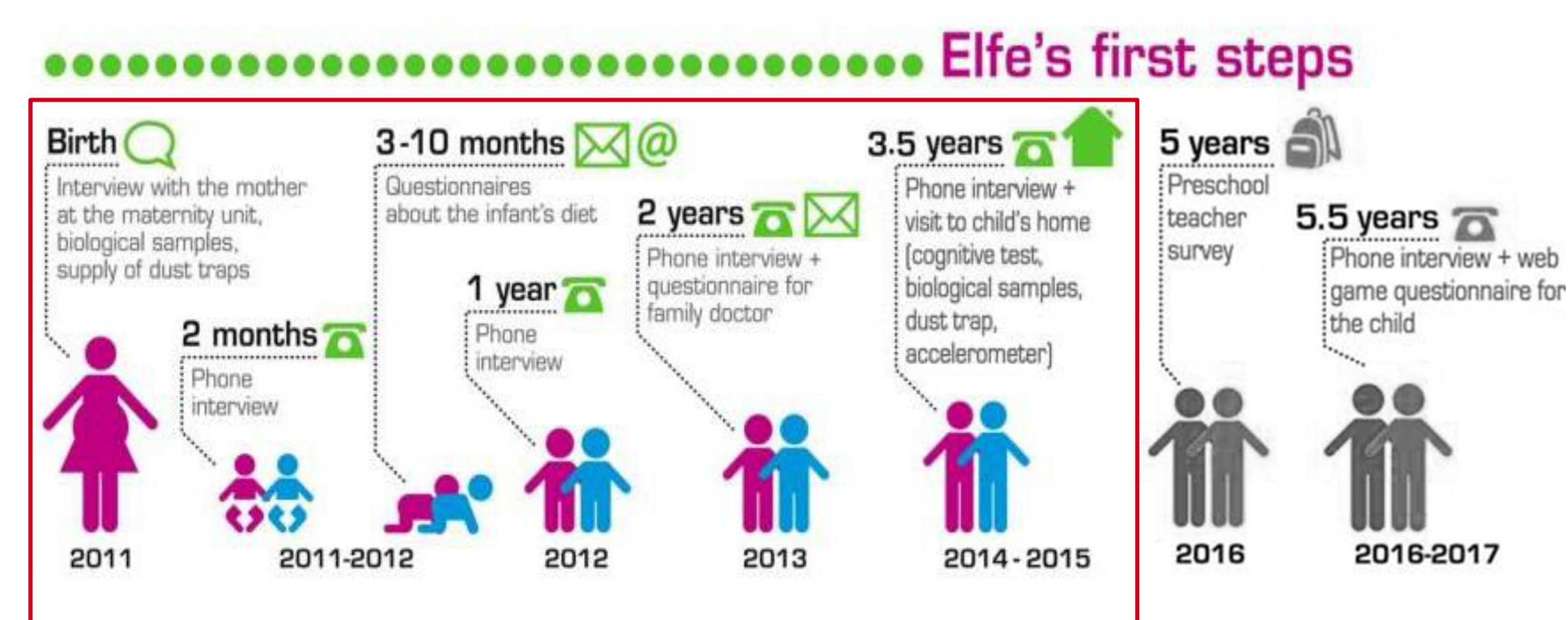
Operationalisation

Occupational Instability

- Employment status
- Single/dual earner
- Type of contract
- Job sector

Early skills development

- Cognitive (MacArthur-Bates CDI, British Ability Scale)
- Behavioural (Strengths and Difficulties Questionnaire)
- Motor (Child Development Inventory)



**Waves of the survey ELFE included in the analyses*

Research Questions

1. Does occupational instability affect early skill development in Continental Europe? The French case.
2. How does occupational instability affect early skill development? An exploration of the mechanisms.
3. How does welfare mediate or compensate for the impact of economic instability? Comparing the role of family support in France and Germany

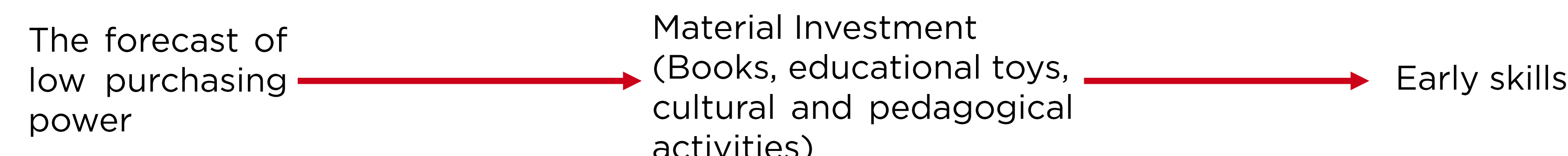
Analytical Strategy

1. Controlling for a rich set of observed variables: analysis of the patterns of the association and its heterogeneity.
2. Controlling for unobserved variables: fixed effect models.

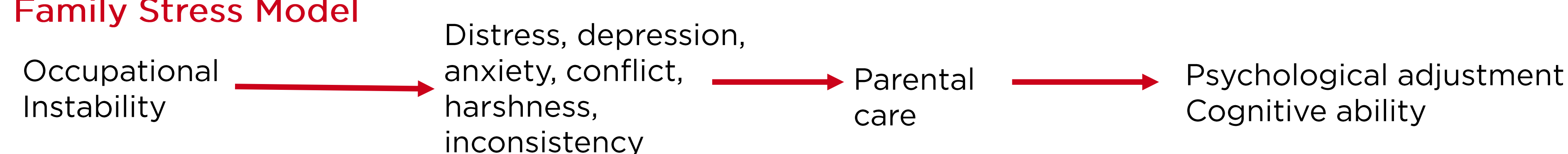
Theoretical Framework

I will mainly refer to the following models:

Family Investment Model



Family Stress Model



Moreover, Layte (2017) suggests taking into account the interaction of both models.

Furthermore, the instability in the job schedule of the parents can hamper the access to formal childcare (Carrillo et al. 2017), which is associated to better outcomes in early skills development.