



## Internship on Child Well-Being

From June 2024, 3 months minimum

The Child Well-Being Unit of the OECD-WISE Center is looking for an intern to contribute to its data and analytical work, including on the measure of child well-being subjective well-being and childhood disadvantage. The intern will contribute to two main areas of work:

- *Child data development*: Support the production of key child well-being indicators from international surveys (e.g., PISA, HSBC, EU-SILC) for the update of the [OECD Child Well-being Data Portal](#). The intern will also help prepare meetings with National Statistical Offices' contact points on ways to improve cross-national data on child well-being and the cost of children. He/She will also participate in the public communication of key child well-being indicators and findings by visualising results in a Dashboard, and preparing short notes for communication and use of these data in OECD publications and outside.
- *Conduct statistical analysis* that explores the relationship of gender and key child well-being outcomes for an upcoming publication. In particular, the intern will be tasked with carrying out econometric analyses to identify and explain the gender differences in subjective well-being reported by young teenagers. The results obtained will contribute to the international literature on this subject. This work will be carried out under the guidance of a policy analyst leading this work and the head of the child well-being unit.
- The intern may also be asked to contribute to other unit projects, including on child digital well-being, the implementation of the European Child Guarantee, and the preparation of the 2025 Social Policy Ministerials.

Experience with statistical modelling and a good command of **R** or **Stata** is required. The internship is expected to last between **3 and 6 months**, with a preference for 6 months, starting from June 2024. The internship will require **presence in Paris**, and on-site work in accordance with the current rules governing access to the office. The conditions applying to internships at the OECD can be found here: <https://www.oecd.org/careers/internship-programme/>

### Ideal Candidate Profile

- An advanced university degree or equivalent qualification in statistics, economics, econometrics or social sciences, with a strong foundation in quantitative analysis and statistics.
- Advanced knowledge of statistical and econometric methods and related software (e.g., STATA, R, SAS, MATLAB, Visual Basic).
- Proficiency with standard MS software.

More information on this project and the content of the internship can be obtained from Olivier Thévenon ([Olivier.Thevenon@oecd.org](mailto:Olivier.Thevenon@oecd.org)) and Nora Brüning ([Nora.Bruning@oecd.org](mailto:Nora.Bruning@oecd.org))

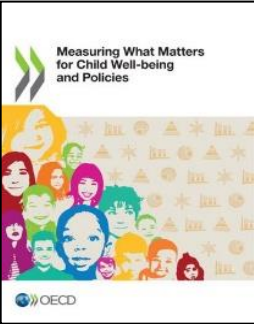
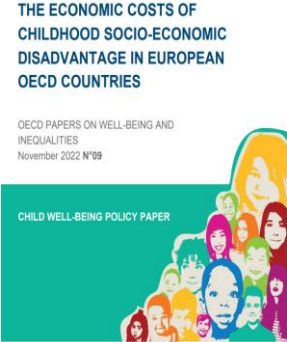
## About WISE

The Centre on Well-Being, Inclusion, Sustainability and Equal opportunities (WISE) is an agile and innovative entity that aims to strengthen the OECD's capacity to help countries implement a cross-cutting agenda on well-being. WISE's mission consists in developing new tools, evidence and policy solutions that are centred on people and focus on promoting greater opportunities and well-being as key pillars for shared economic prosperity, social inclusion and environmental sustainability.

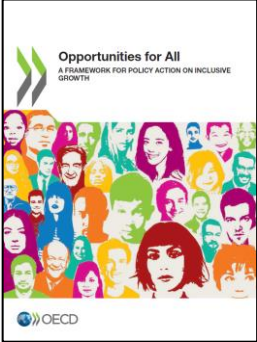
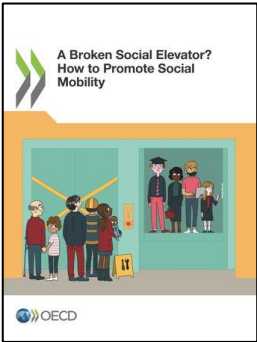
WISE works across disciplines and policy areas to design comprehensive responses that can match the complexity of the challenges faced by governments and ensure that people and their well-being remain at the heart of recovery strategies following the COVID-19 pandemic. Well-being, inclusion and sustainability is not an agenda for governments alone, but for the whole of society. Recognising this, WISE seeks to better align the action of government with that of civil society and the private sector through timely data, common standards and platforms for collaboration, such as Business for Inclusive Growth (B4IG) for example.

# OECD Centre on Well-being, Inclusion, Sustainability and Equal Opportunity (WISE)

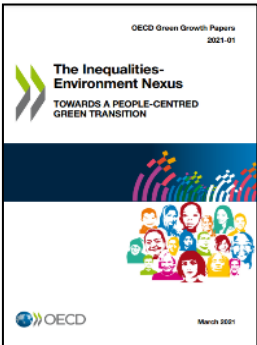
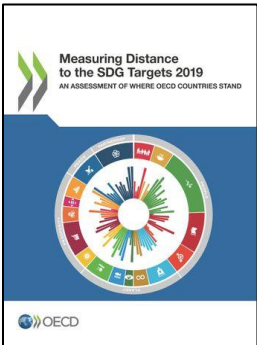
## Our work on child well-being



## Our work on inclusion



## Our work on sustainability



## Stay in touch with the OECD WISE Centre

@ Contact us:  
[wellbeing@oecd.org](mailto:wellbeing@oecd.org)

Learn more about the Centre:  
[www.oecd.org/wise](http://www.oecd.org/wise)

Subscribe to our newsletter:  
[oe.cd/wellbeingnews](http://oe.cd/wellbeingnews)

Follow-us:  
[@OECD\\_Stat](https://twitter.com/OECD_Stat)