



Research Project

Synthesizing the Impact of Thailand's
Logistics Infrastructure Management and
Supply Chain Redesign within the context of
the ASEAN Economic Community (AEC)



Associate Professor Ruth Banomyong (Ph.D.)

Head of International Business, Logistics Transport, Thammasat Business School

Director of Logistics Research Center, Thammasat University



Research Team



Dr. Ruth Banomyong
Thammasat University



Dr. Apichat Sopadang
Chiang Mai University



Dr. Narong Pomlaktong
Thailand Development Research Institute (TDRI)



Dr. Poon Thiengburanathum
Chiang Mai University



Krit Pattamaroj
Thammasat University

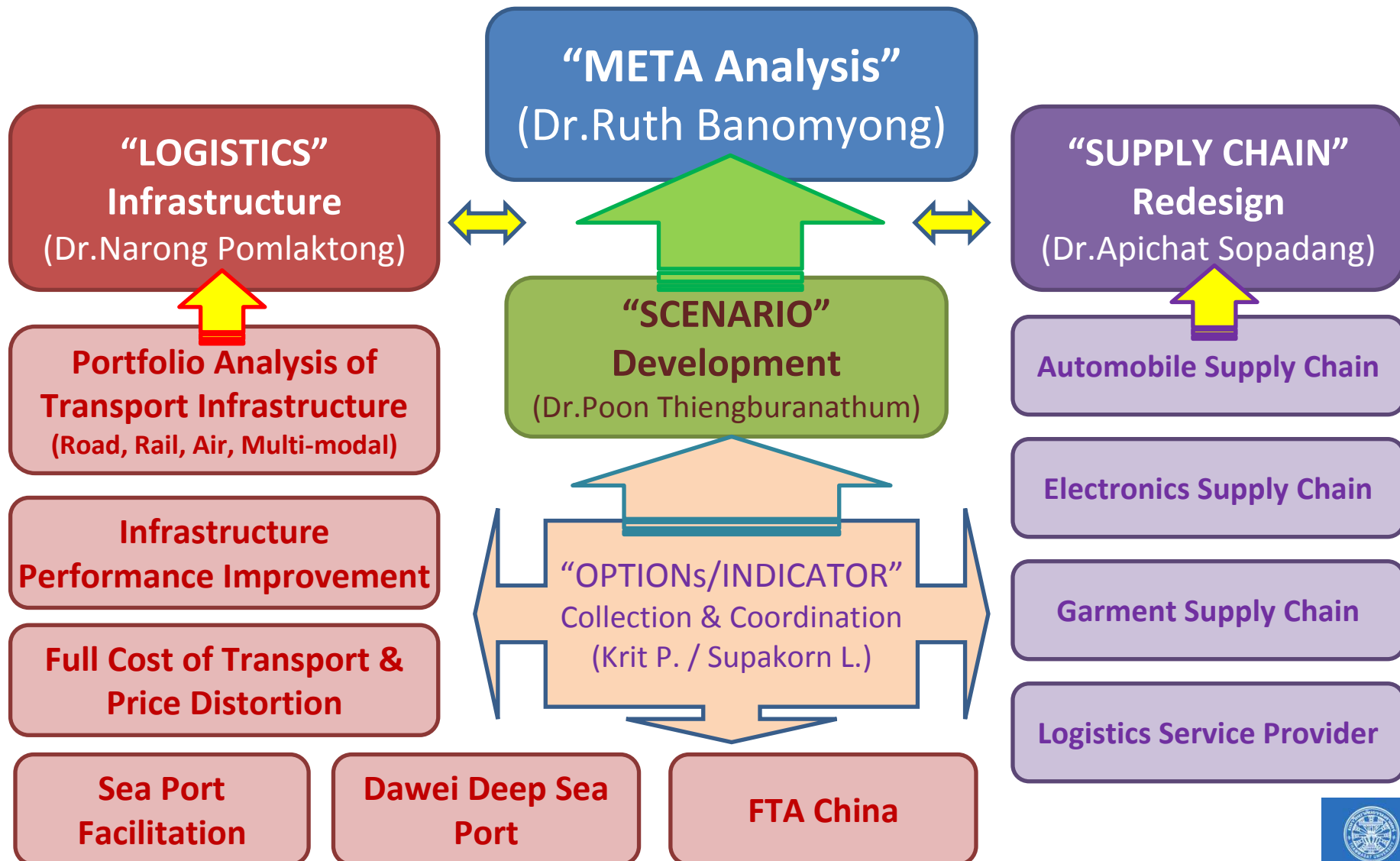


Supakorn Limkhunthammo
Rajamankala University of Technology Suvarnabhumi



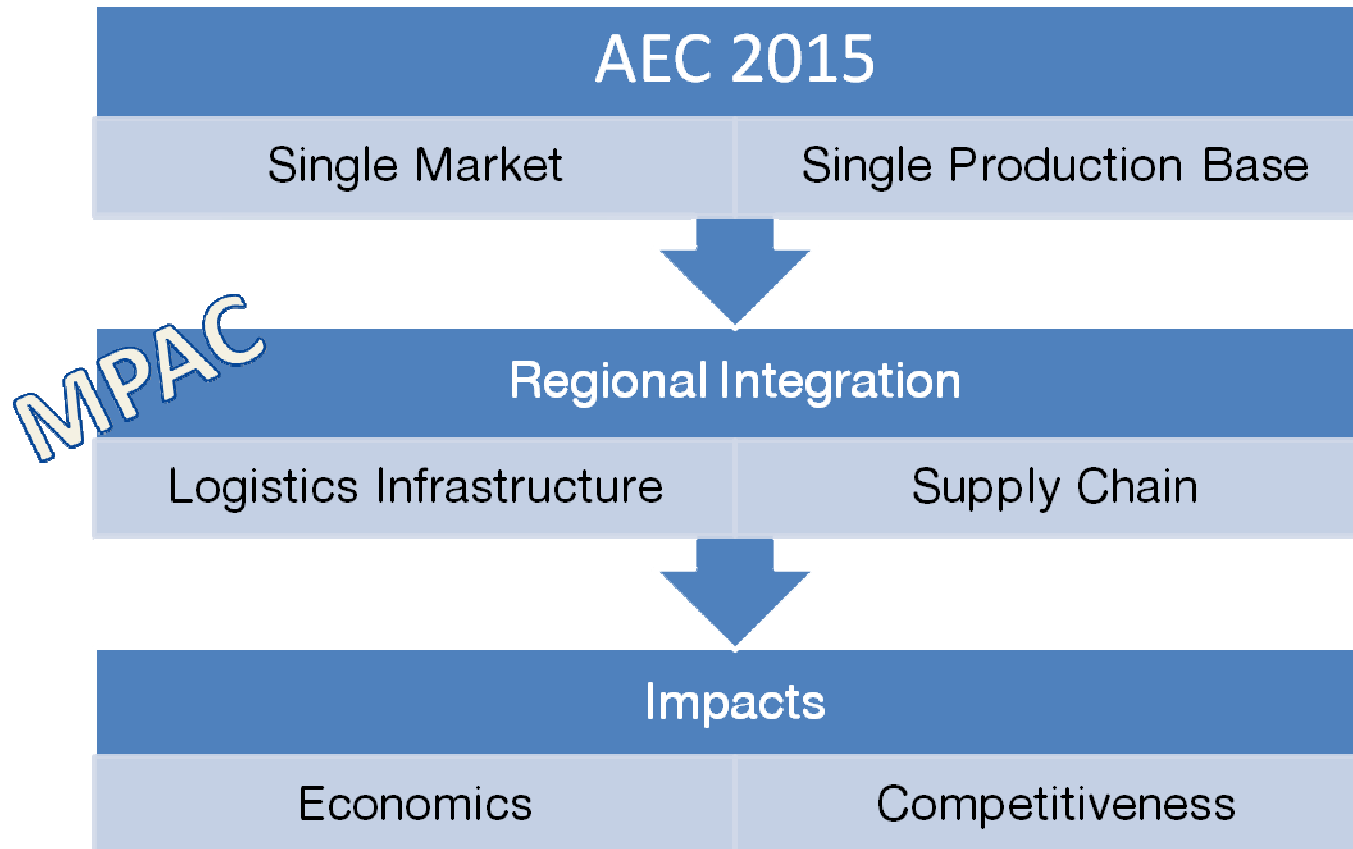


Research Structure





Research Background



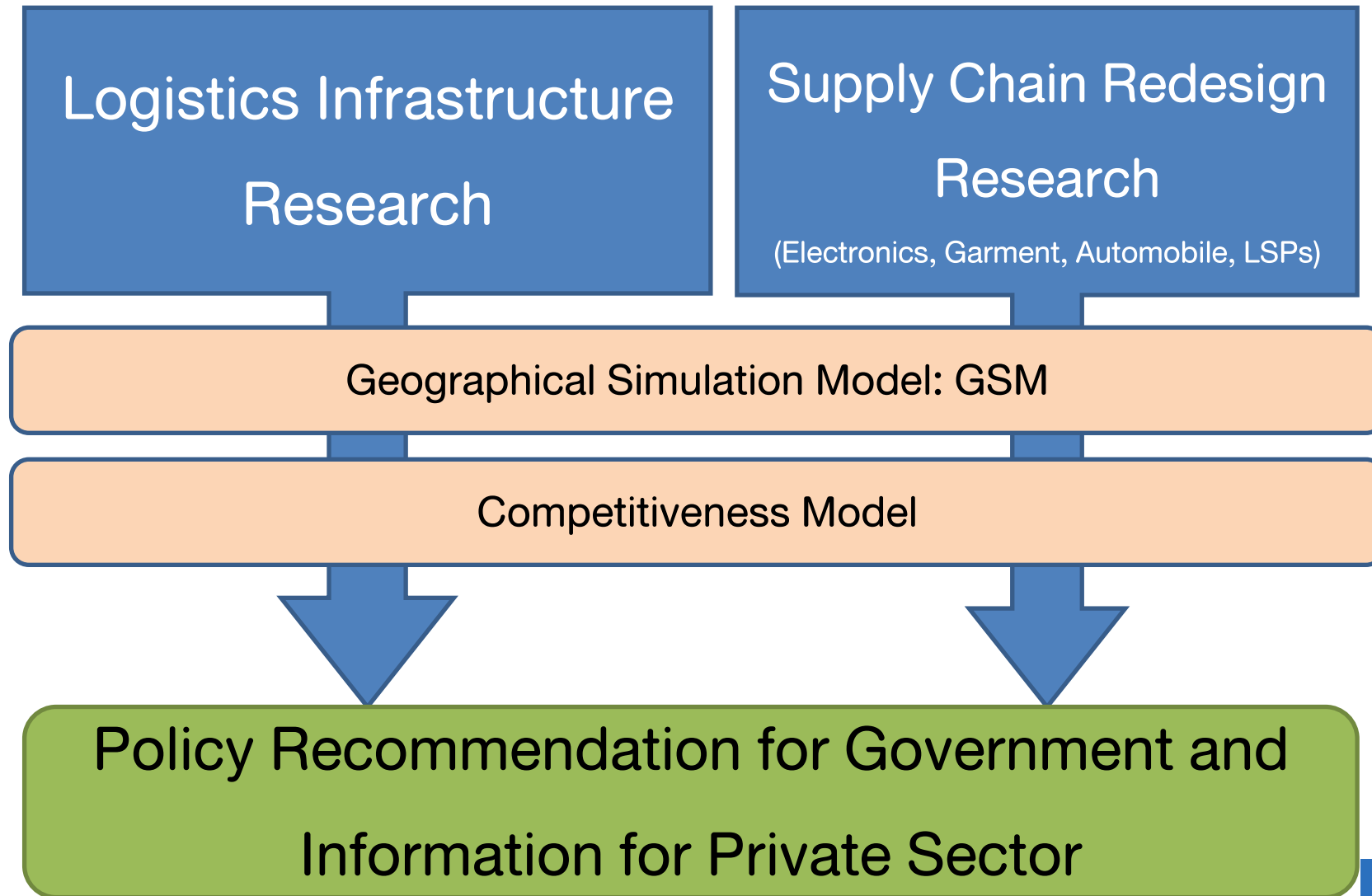
Key Transport Strategies for Master Plan on ASEAN Connectivity

- ❑ As transport is viewed as a priority mode of connectivity, ASTP is expected to input several key strategies to enhance ASEAN Connectivity.
- ❑ Out of the comprehensive, though still tentative, list of goals and actions proposed in the Midterm Report of ASTP and its update, we would like to propose the followings as key transport strategies to enhance ASEAN’s connectivity. The order reflects the proposed priority.

Strategies for Connectivity Master Plan	Goals proposed in ASTP Midterm Report	
Strategy 1	TF-Goal 1	Fully operationalize three Framework Agreements on transport facilitation
Strategy 2	LT-Goal 2	Establish integrated ASEAN Highway Network.
Strategy 3	MT-Goal 1	Accomplish the efficient and competitive maritime transport system.
Strategy 4	AT-Goal 1	Establish ASEAN Single Aviation Market (ASAM).
Strategy 5	LT-Goal 1	Accomplish the implementation of Singapore Kunming Rail Link (SKRL) project.
Strategy 6	TF-Goal 1 LT-Goal 10 MT-Goal 6	Establish harmonized, integrated, and seamless multimodal transport system.



Research Background

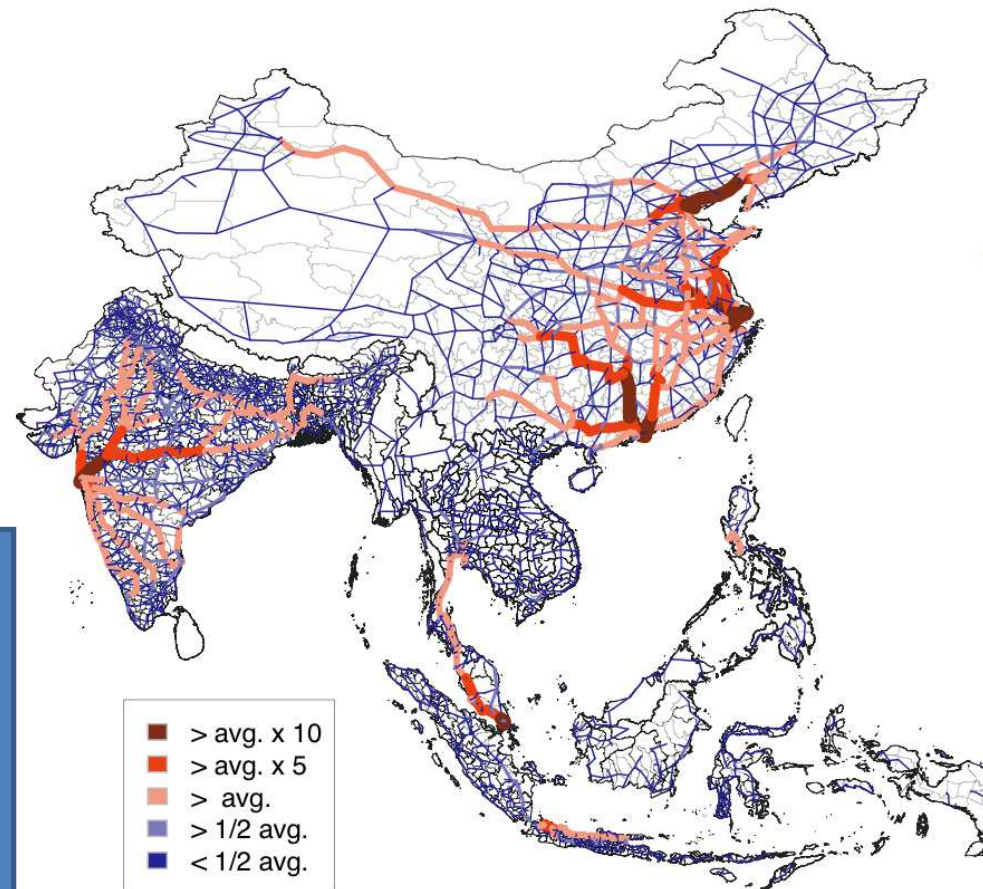




Geographical Simulation Model: GSM

- To simulate the dynamics of population and industries for long-term
- To analyze the effects of infrastructure projects and customs facilitation on the economic activities at prefecture level

13 Countries
1,650 regions
3,109 nodes
5,099 routes
Road: 4,114
Sea: 535
Air: 332
Rail: 118

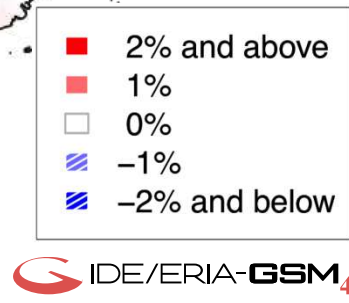
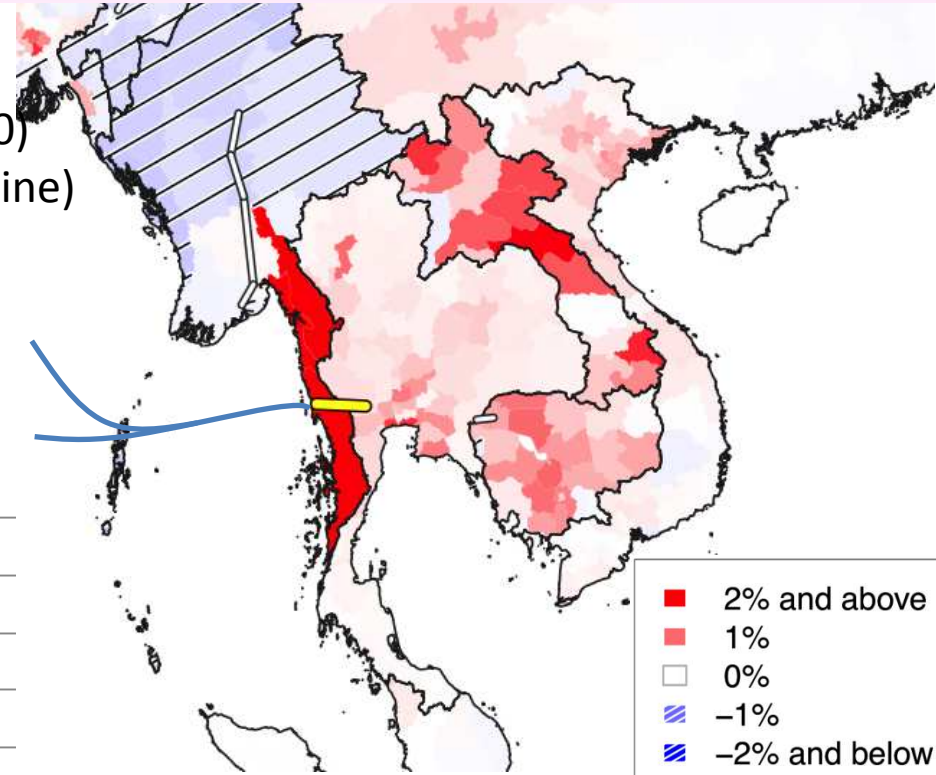
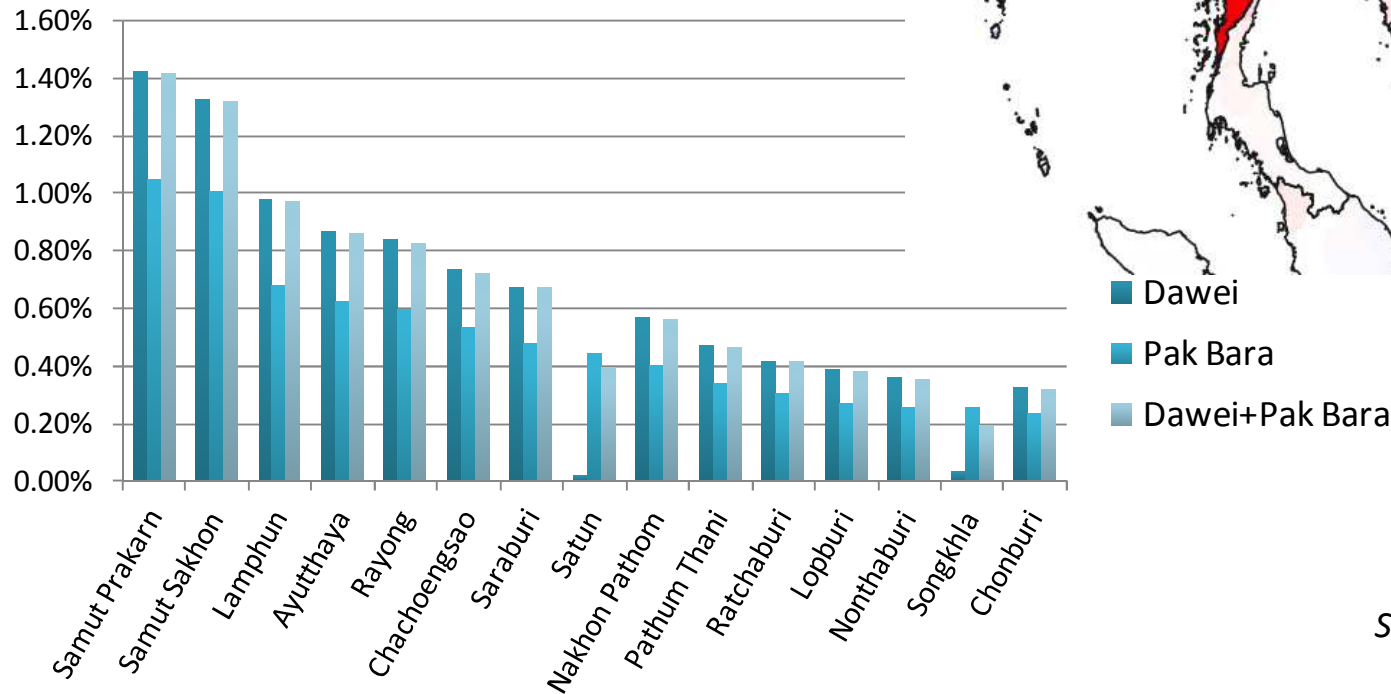




Geographical Simulation Model: GSM

Economic Impacts of the **Dawei** (2030)
(Scenario 1, compared with the baseline)

Economic Impacts of the **Dawei, Pak Bara**
and **Dawei + Pak Bara** (2030)



Source: ERIA Report

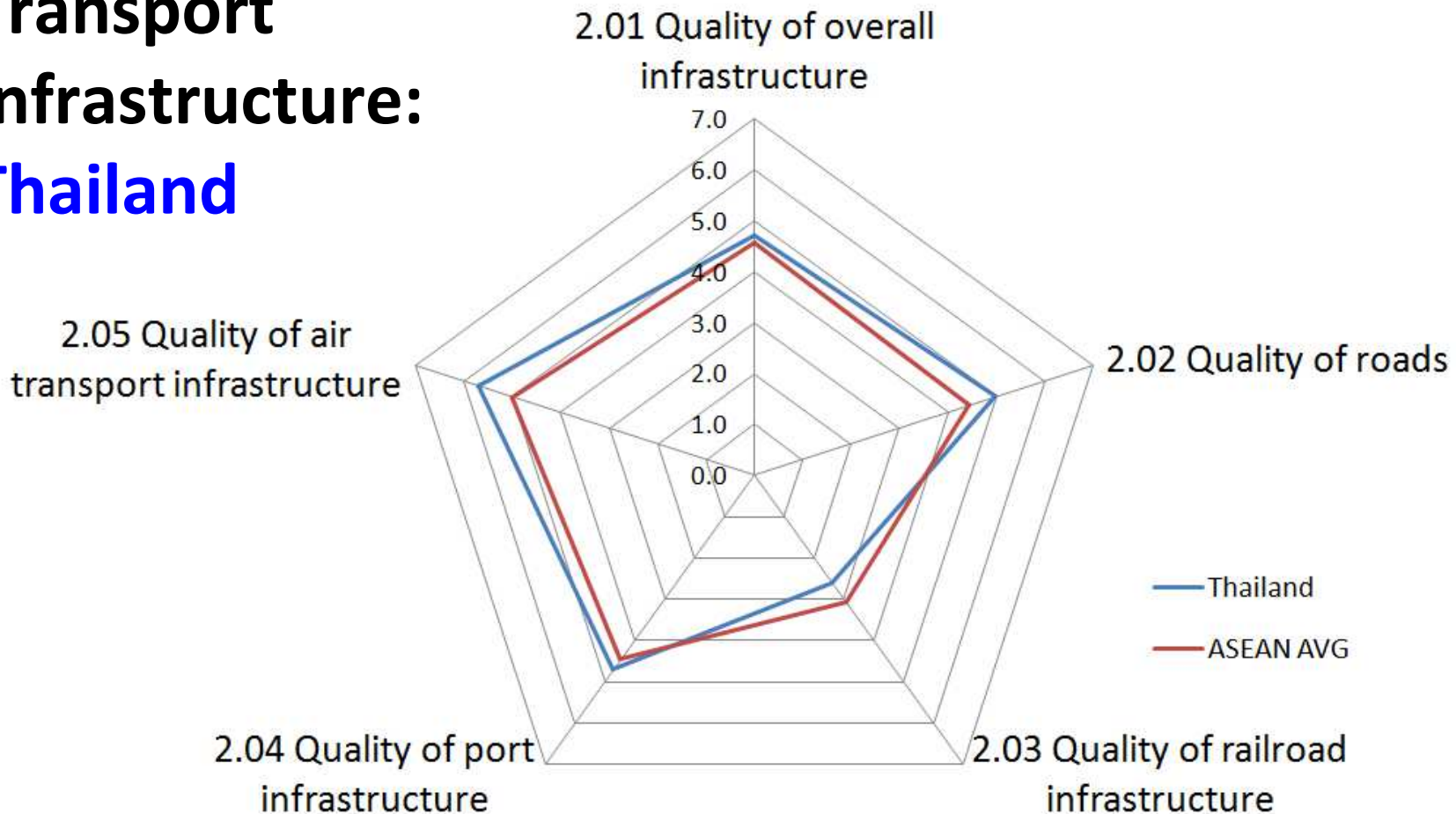
∨ Economic Community (AEC)





Sample of Competitiveness Model

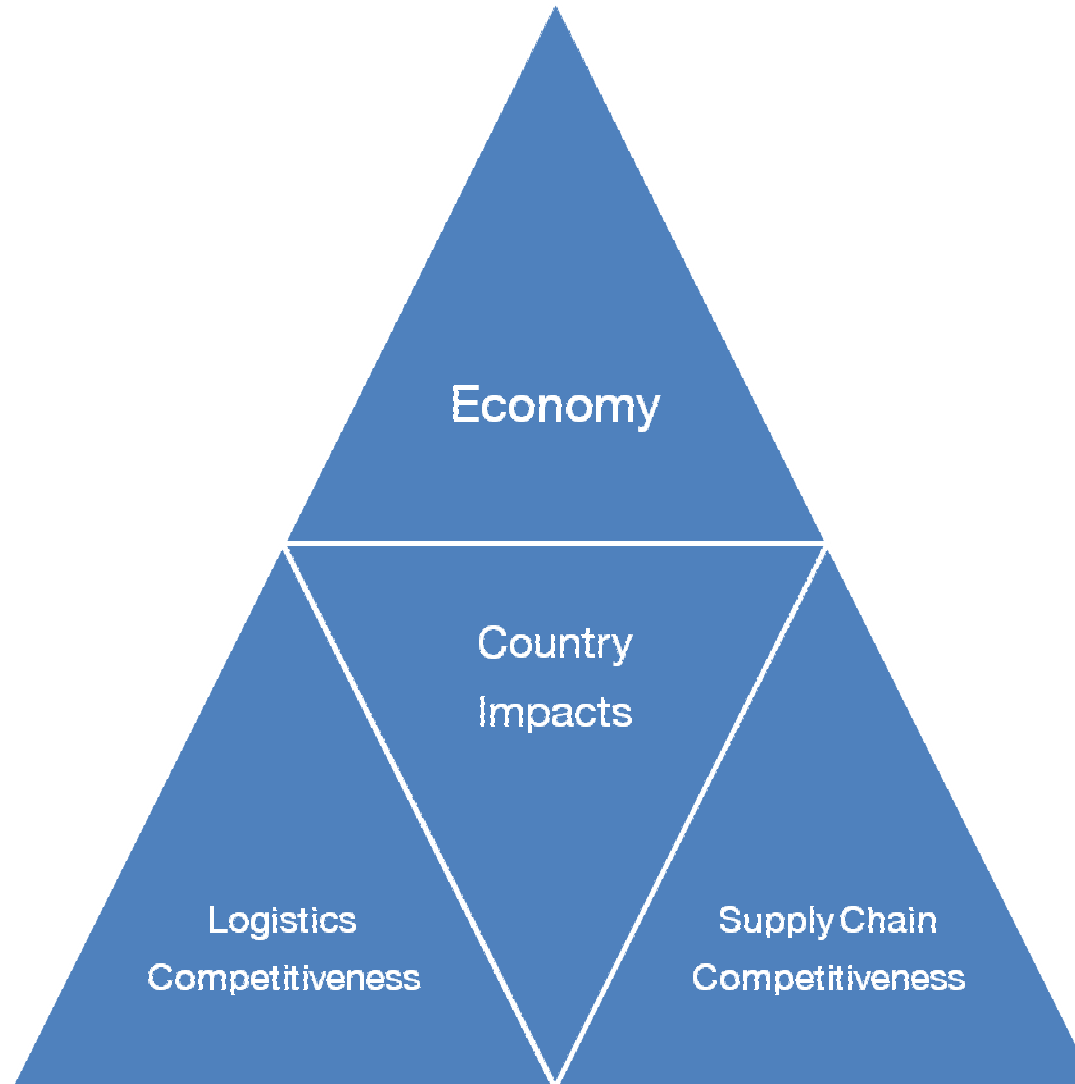
Transport Infrastructure: Thailand



Source: World Economic Forum, (2011) *The Global Competitiveness Report 2011–2012*



Research Outcome





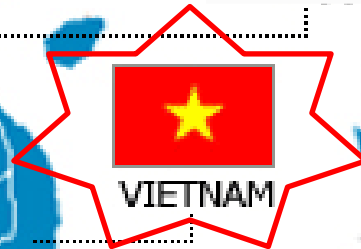
Research Journey....



2013



2013



PHILIPPINES

2012



SINGAPORE



2013

2013



INDONESIA





Q & A



Synthesizing the Impact of Thailand's Logistics Infrastructure Management and Supply Chain Redesign within the context of the ASEAN Economic Community (AEC)



Associate Professor Ruth Banomyong (Ph.D.)

Head of International Business, Logistics Transport, Thammasat Business School

Director of Logistics Research Center, Thammasat University